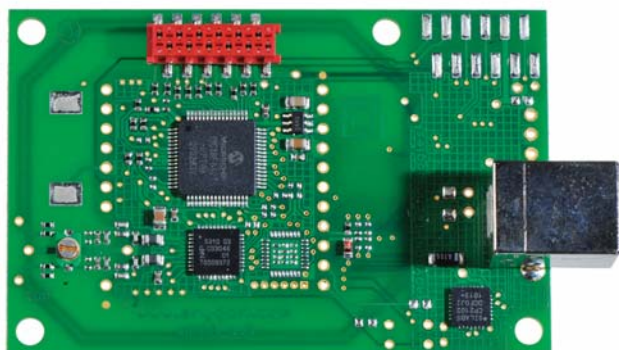




IDENTIVE

APPB

NFC / MIFARE® / FeliCa™ - Plug 'n Play Module



- ISO14443, ISO18092 Near Field Communication (NFC)
- Peer-to-peer (P2P)
- Sony FeliCa™
- EasyCommunication protocol
- PIN code protected EEPROM area
- libnfc compliant
- Optional PC/SC 2.01 compliant driver



Typical Applications

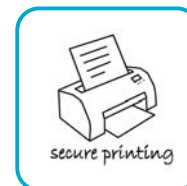
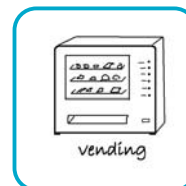
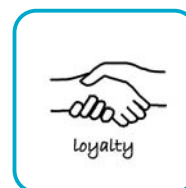
- NFC, payment, vending, printer, metering
- E-Service, Point of Sales (PoS)
- Ticketing, terminals
- Access control

The IDENTIVE Plug 'n' Play reader is one of the fastest, most reliable and flexible NFC OEM readers in the market. It supports all major transponders compliant with NFC Tag Type 1, 2, 3, 4. Besides peer-to-peer communication (ISO18092), it covers Topaz, FeliCa (unsecured mode) as well as NXP MIFARE Classic, MIFARE Ultralight / C, MIFARE DESFire / EV1 and Infineon my-d move.

Due to the EasyCommunication protocol, IDENTIVE plug 'n play' reader allows fast and easy application development, can communicate with several NFC mobile phones and offers many possibilities for fast customization.

Ordering Information

- APPB2US00:** USB, USB bus powered
- APPB2UA33:** UART (CMOS-TTL), 3.3 VDC
- APPB23205:** RS232, 5 VDC
- APPB2I233:** I2C, 3.3 VDC
- APPB2I205:** I2C, 5 VDC





APPB

NFC / MIFARE® / FeliCa™ - Plug 'n Play Module

Parameters		Descriptions
Interfaces	Host	<ul style="list-style-type: none"> • USB: Full speed 2.0 via Virtual Com Port (VCP) - Baud rate up to 460.8kBaude / 8, N, 1 • UART / RS232: Baud rate up to 230.4kBaude / 8, N, 1 • I2C: Baud rate up to 100kbps
	Contactless / NFC	<ul style="list-style-type: none"> • Supported standards: ISO14443 A & B, ISO18092 • Communication speed: Baud rate up to 424kBaude • Reading distance [cm]: Up to 5 - depending on tags and antenna
	Human	<ul style="list-style-type: none"> • Optional buzzer²
Supported Tags		<ul style="list-style-type: none"> • MIFARE family: Classic 1K / 4K, Ultralight / Ultralight -C, DESFire, DESFire EV1 • Topaz¹, FeliCa™¹ (unsecure), my-d™ move, my-d™¹ • NFC Forum Tag Types 1-4, ISO14443-smart cards ICs
Antenna		<ul style="list-style-type: none"> • Integrated
Software	Command set	<ul style="list-style-type: none"> • EasyCommunication protocol, direct chip-commands support
	Firmware	<ul style="list-style-type: none"> • Infield upgradeable
Hardware	Special features	<ul style="list-style-type: none"> • User I/O: 8 GPIOs, 1 x Open drain (PIN), 3 x PWM (PIN) and 1 x analog input (solder pad), user interrupt pin for wake up, 2 line LCD support, Molex connector
Operating Systems	Drivers	<ul style="list-style-type: none"> • VCP: Windows 2000 / Server 2003 / XP / Vista / 7, Linux, Mac OS X (32 & 64-bit) • PC/SC²: Windows 2000 / XP / Vista , Linux (32-bit only)
Power	Supply [Vdc]	<ul style="list-style-type: none"> • APPB2US00: USB bus powered • APPB2xx05: 5 (±10%) • APPB2xx33: 3.6...6 (-3/+10%)
	Consumption [mA]	<ul style="list-style-type: none"> • Up to 110 / Sleep mode: (approx.) 2
Dimensions	L x W x H [mm]	<ul style="list-style-type: none"> • 70 x 45 x 4...13 (depending on connector)
Weight	[g]	<ul style="list-style-type: none"> • (approx.) 10
Temperature	Operating [°C]	<ul style="list-style-type: none"> • -20 to +80
	Storage [°C]	<ul style="list-style-type: none"> • -40 to +85
Approvals	Funtional	<ul style="list-style-type: none"> • Microsoft® WHQL (VCP driver)
	Environmental	<ul style="list-style-type: none"> • RoHS, WEEE

Technical data are subject to change without notice.

Notes:

1. Through direct chip-commands support
2. The PC/SC driver provided for this reader is just an alternate driver for supporting PCSC based applications; it is not a mandatory driver for the normal functionality of this reader

Contacts

Identive GmbH
Oskar-Messter-Str. 13
85737 Ismaning
Germany

Phone + 49 89 9595 5000
sales@identive-infrastructure.com

Identive Group, Inc
1900-B Carnegie Avenue
Santa Ana, CA 92705
USA

Phone + 1 888 446 9008
scmsales@identive-infrastructure.com

Identive KK
GoogolPlex Millennium Building 6F
4-4-20 Shiba, Minato-ku,
Tokyo, 108-0014, Japan

Phone + 81 3 6414 6611
sales@identive-infrastructure.co.jp

Identive GmbH
Unit 11, 4607-11,
The CENTRE
99 Queen's Road Central
Hong Kong

Phone + 91 44 2254 0020
sales@identive-infrastructure.com